

Button Operation

MODE LOCK

Dispensing Period

Press to set dispensing period 1~12 month

Automatic Lock Out Mode

Press for 2 seconds to unlock (🔒)

POWER

Power ON/OFF

Press to Power unit On or Off

POWER + MODE LOCK

Vibration Detection Mode

(Refer to the Installation Guideline Step 7)

Hold the Power button and then press the Mode button

TEST

Grease Capacity

Press to select 60ml/125ml/250ml

TEST Mode

ON : Press for 2 seconds

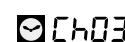
OFF : Short press of button

(will stop after completion of ongoing cycle)

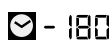
LCD Display



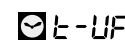
Dispensing period setting



Number of days operation has been on hold due to excessive backpressure



Remaining dispensing days



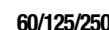
Maximum runtime has been reached (🔒 and 🔴 will also display)



Automatic Lock Out mode



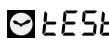
Low battery power



Grease pouch capacity



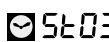
Operation on hold due to excessive backpressure



TEST mode



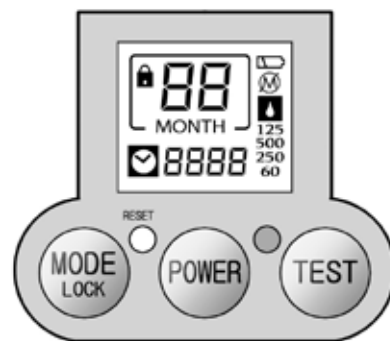
Empty grease level



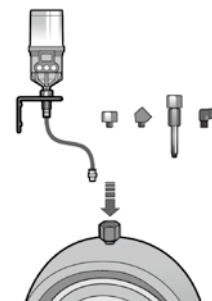
Number of days since the cycle ended (🔒 and 🔴 will also display)



LED blinks when battery is low, excessive backpressure exists, or grease level is empty



Mounting Methods

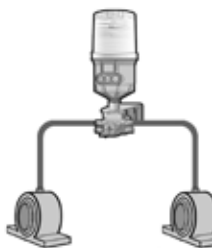


Single Point Installation

Direct Mount or Remote Installation using Extension Tubing

Direct mount is always preferable. For applications not allowing any direct mounts, remotely mount the unit using appropriate accessories and keep the distance from the lube point as short as possible.

For remote installation using a tube, use a Ø6 (1/4") tube pre-filled with the same or compatible grease as the grease contained in the unit.



Multi-Point Installation

Multi-Point Remote Installation using Progressive Divider Block

Ensure the break-off pressure is below the average operating pressure of 30bar (435psi).

Warning

- ▶ Do not block any ports on divider block and use a divider block corresponding to the number of ports required for multi-point installation. (Ex. HU-3RS for 3 lube points, HU-5RS for 5 lube points)
- ▶ For more information, please refer to the Multi-Point Remote Installation user manual. (Reference : Website > PRODUCTS > PULSARLUBE INSTALLATION KITS)

Precautions

Wiring : The cable from the vibration detector should not touch the motor directly. Adjust the cable length using a tie band if necessary.

Regular Inspection : Keep the position of the vibration detector vertical. When performing periodic maintenance checks, re-run Vibration Detection Mode to ensure vibration is correctly being detected. Adjust position of sensor box and sensitivity as needed.

Replace Service Pack after the Recommended Use Time : If **t-UP** appears on the LCD after 2 years (250ml : 1 year and 6 months) from the installation date, replace the service pack immediately, even if the grease remains in the pouch. (Dispensing failures may occur after long periods of time due to grease hardening and/or drops in battery voltage.)

Shelf life and Product Warranty Warranty is limited to original defects in material and workmanship and will not cover any collateral damage due to mishandling, abuse and /or any other inappropriate use of this product. Warranty period is 1 year from the date of purchase.

Rev.06

ISO9001/14001



PULSARLUBE

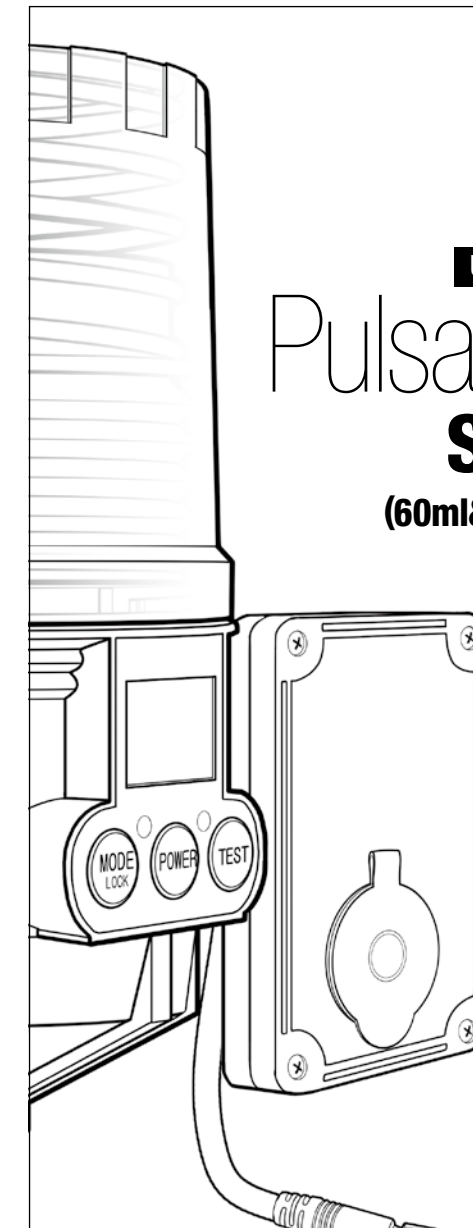
The World Leader of Automatic Lubrication

PULSARLUBE

User Manual

Pulsarlube Mi Series

(60ml&125ml&250ml)

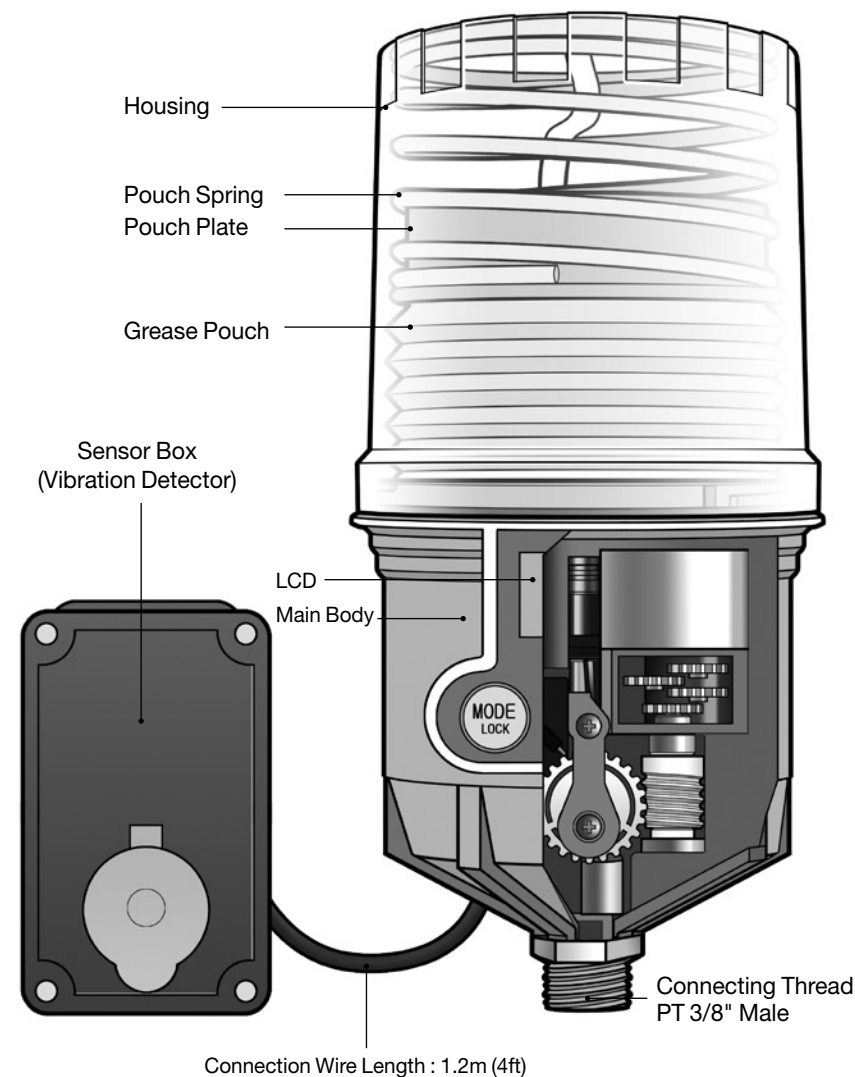


Pulsarlube USA, Inc.

1170 Ardmore Ave Itasca IL 60143, USA

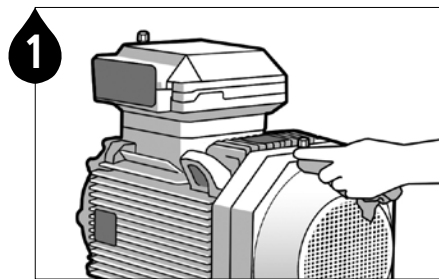
TEL:1-847-593-5300 FAX:1-847-593-5303 www.pulsarlube.com / info@pulsarlube.com

Product Details

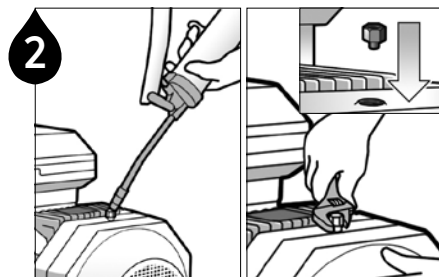


Installation Guidelines

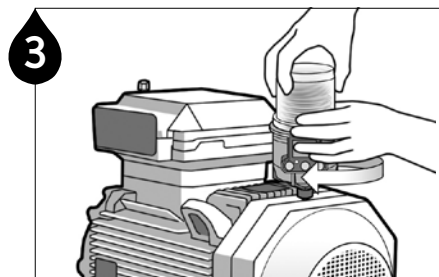
* All parts should be assembled tightly with PTFE tape.



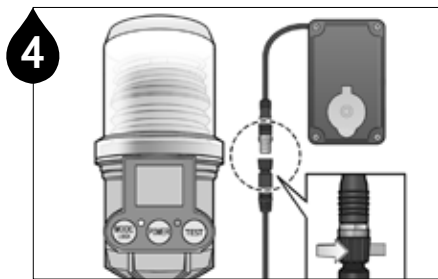
1 Remove contaminants around the lube point.



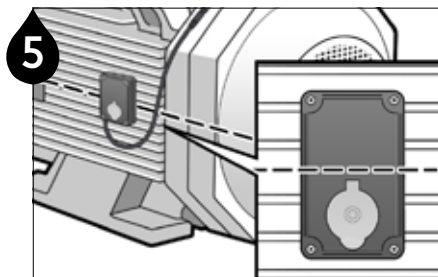
2 Ensure a clear passage by purging the lube point with a manual grease gun. (Use the same or compatible grease)



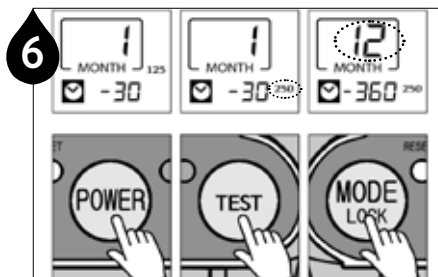
3 Install the lubricator on the lube point.



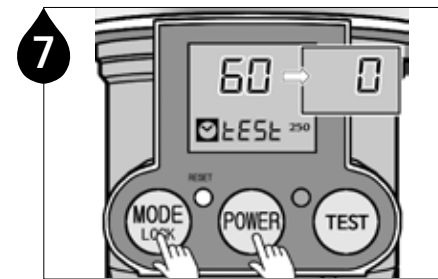
4 Connect the cable of lubricator and the sensor box cable.



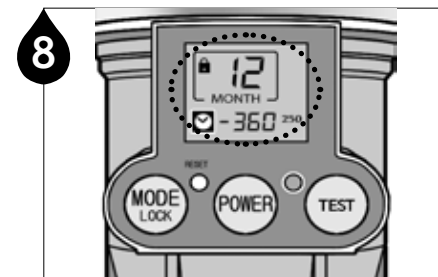
5 Position the sensor box vertically and align it to the shaft of the motor. The cap should be positioned facing downwards.



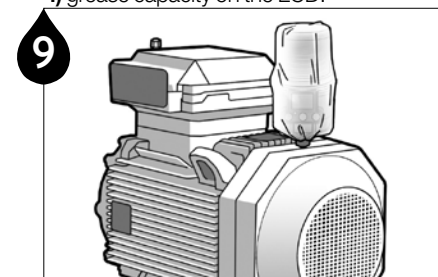
6 Press **POWER** to power on → press **TEST** to select the grease capacity → press **MODE LOCK** to set desired dispensing period.



7 Hold **MODE LOCK** and press **POWER** to start Vibration Detection Mode. Refer to the instructions "How To Adjust Sensor Level"



8 After setting the sensor level, set up is completed if you can see **1**) the lock icon **2**) remaining days **3**) set dispensing period and **4**) grease capacity on the LCD.



9 Install the dust cover over the lubricator for added protection.

How To Adjust Sensor Level

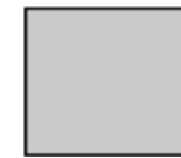
1. Open the yellow cap of sensor box.
2. Hold **MODE LOCK** and press **POWER** to start Vibration Detection Mode. It will last approximately 60 seconds.
3. While the unit is in Vibration Detection Mode, turn the dial counterclockwise to lower sensitivity and turn clockwise to raise sensitivity. **0** is the lowest sensitivity and **10** is the highest sensitivity. (Factory default setting: **10**)
4. To achieve the optimal sensitivity level (the lowest sensitivity at which vibration is being detected), lower the sensitivity by turning the dial counterclockwise until the clock icon disappears. Then, slightly raise sensitivity until the clock icon and red LED reappear.
5. If you fail to set the optimal sensitivity level, relocate the sensor box and repeat steps 2-4.

NOTE The sensor detects vibration every **15**minutes for 60ml/125ml and every **30**minutes for 250ml.

LCD Display During Proper Synchronization



LCD displays icons **within 30 minutes** of equipment powering on.

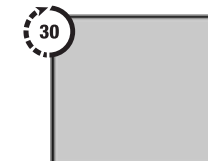


LCD displays nothing **after 30 minutes** of equipment powering off.

LCD Display During Improper Synchronization



LCD continues to display icons **after 30 minutes** of equipment powering off.



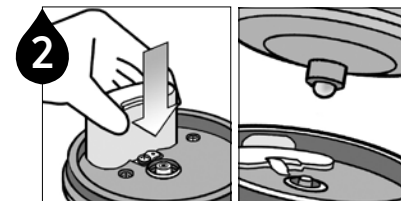
LCD is not displaying icons **within 30 minutes** of equipment powering on.

NOTE If the unit is not operating in synchronization properly, adjust and/or relocate the sensor box. If the problem persists, contact your local distributor or sales rep.

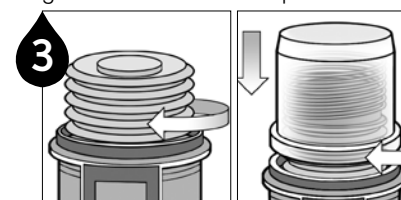
How To Replace Service Pack



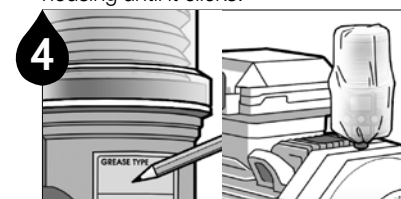
1 Check the grease pouch capacity and the service pack items (battery pack, grease pouch, dust cover & label).



2 Insert the battery pack, secure the battery clip, and purge the grease pouch until grease comes out of the tip.



3 Carefully screw the grease pouch in without over-tightening and refit the housing until it clicks.



4 Note the installation date and the completion date of lube cycle on the label. Install the dust cover over the lubricator.